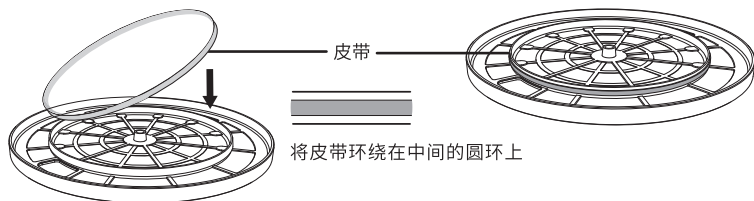
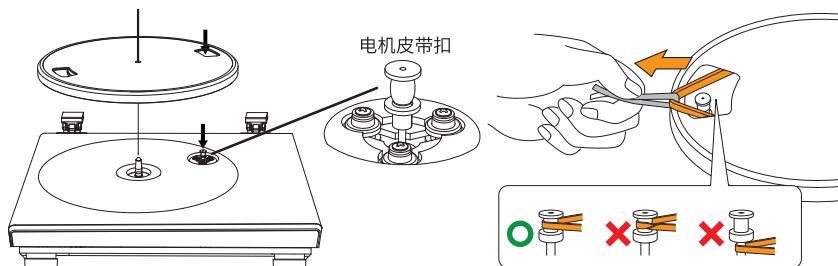


安装转盘/皮带

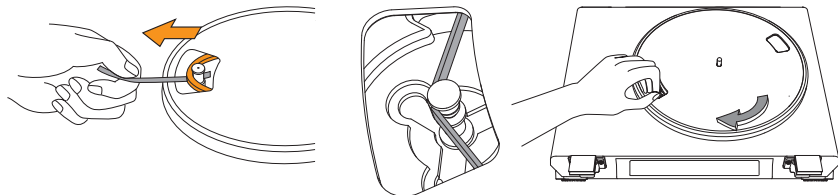
- 皮带为消耗品，若播放速度变慢或旋转不规则，需更换皮带，建议每年更换一次。
- 更换皮带前，务必断开交流适配器。首次使用该唱机时，需安装皮带，步骤如下：
- 翻转转盘，可看到一个凸起的圆环，将皮带环绕在该圆环上。



- 安装转盘：将转盘上的一个开口与电机皮带轮对齐并安装。

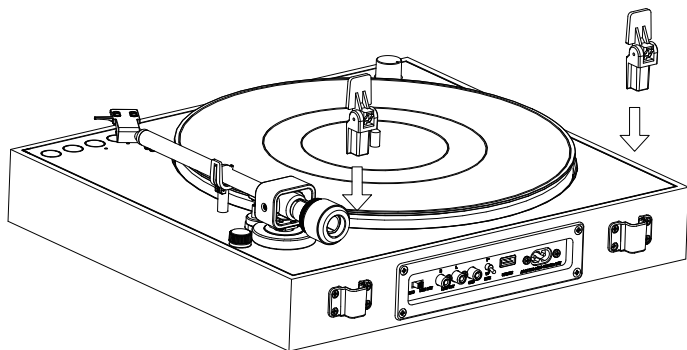


- 皮带套在电机皮带轮上：握住皮带，将其滑入黄铜电机皮带轮的凹槽中，取下皮带上的丝带。
- 用手按图示顺时针缓慢转动转盘十圈。

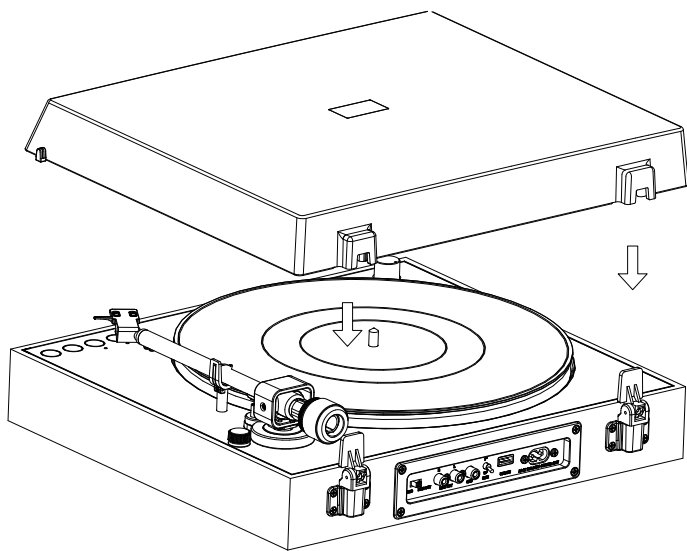


安装透明盖

- 将转轴插入主机槽内



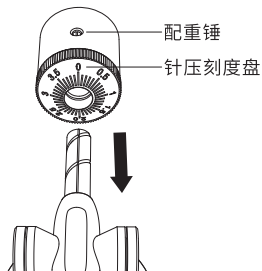
- 将透明盖安装孔对准转轴插入。



针压调节

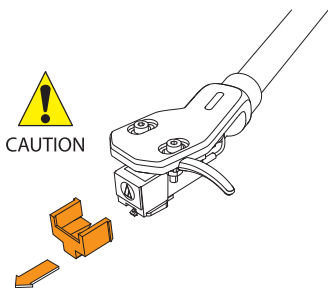
附带的配重块适用于重量在0-4克之间的唱头，调节步骤如下：

- 轻轻推动并旋转配重块，将其安装在唱臂尾部（刻度盘朝向唱片机前方）。

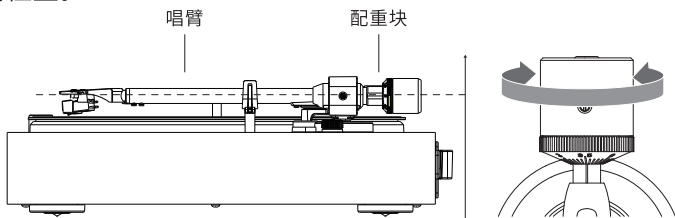


- 水平向前直接取下唱针保护套。

注：向下用力取下保护套可能导致唱针脱离本体。若唱针即将脱离或已脱离，播放时仅会发出微弱声音，此时请参考“更换唱针”部分，确保唱针正确安装。

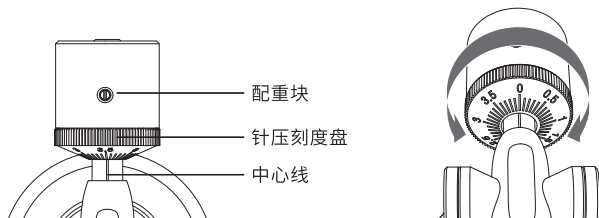


- 取下扎带，解锁唱臂。
- 按下唱臂升降杆，将唱头放置在唱臂支架与转盘之间的空隙处，然后松开唱臂升降杆。
- 小心旋转配重块，直至唱臂达到平衡状态。若不小心触碰唱臂，轻微晃动后唱臂应能回到该平衡位置。

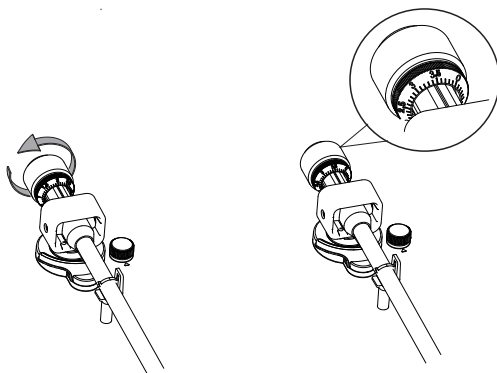


旋转配重块，直至唱臂达到水平平衡状态

- 唱臂达到平衡后,将其轻轻放回唱臂支架并固定。一只手稳住配重块,另一只手旋转针压刻度盘,使“0”刻度线与刻度盘中心线对齐,随后松开唱臂,确认其仍保持水平平衡。



- 最后,逆时针旋转配重块(从前方观察),直至推荐针压数值(3.5克)与针压校准中心线对齐。



注意事项:刻度盘上每个刻度代表 0.1 克,出厂预装唱头的推荐针压为 3.5 克,请仔细旋转配重块至 3.5 刻度处,并与中心线对齐。

- 将抗侧滑旋钮设置为与针压一致的数值。若针压为 3.0 克,抗滑值则设为 3;若左声道出现失真,可略微减小抗滑值;若右声道出现失真,可适当增大抗滑值。

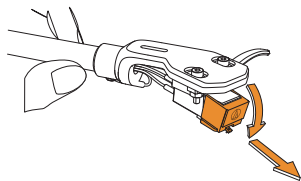


更换唱针

建议唱针使用 400 小时后更换。唱针针尖磨损不仅会导致音质下降,还可能损坏唱片。

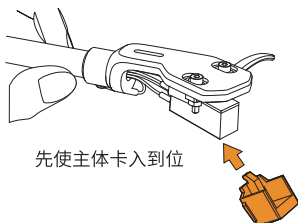
● 拆卸唱针

- 务必断开产品的交流适配器与电源插座的连接。
- 更换唱针时,紧紧握住唱头壳和唱头。
- 向前下方转动唱针前端,即可取下唱针。

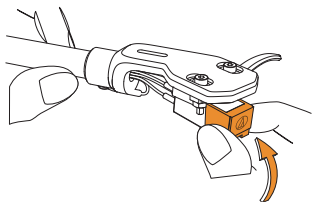


● 安装新唱针

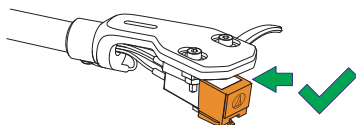
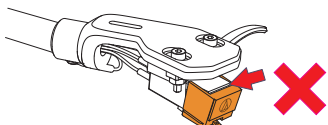
- 将新唱针安装到唱头上,先让唱针主体卡入到位。



- 抬起唱针,直至听到“咔哒”声,确认安装牢固。

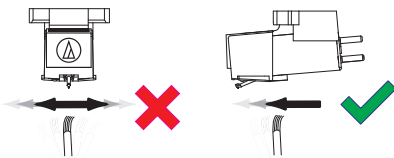


- 确保唱头壳与唱头之间无间隙。



● 清洁唱针

- 唱针沾染灰尘或污垢时,请用软刷清洁。
- 建议使用唱针专用清洁剂(不含)清洁。
- 从唱针针尖根部向针尖方向轻轻清除灰尘。



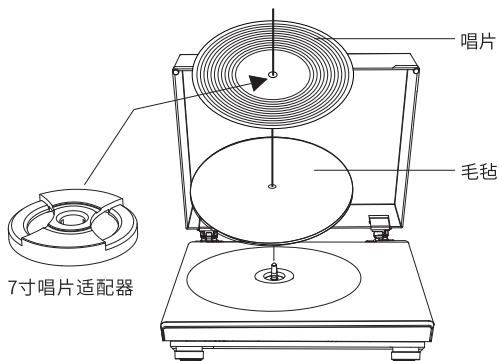
播放唱片

● 播放前准备

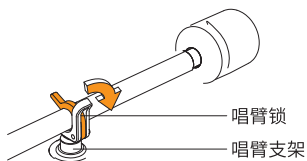
- 水平向前取下唱针保护套

注：向下用力可能导致唱针脱离本体。若唱针即将脱离或已脱离，播放时仅会发出微弱声音，此时请参考“更换唱针”部分，确保唱针正确安装。

- 将唱片放置在毛毡垫上，使唱片中心孔与转轴对齐。



- 解锁唱臂，将其从唱臂支架上取下。

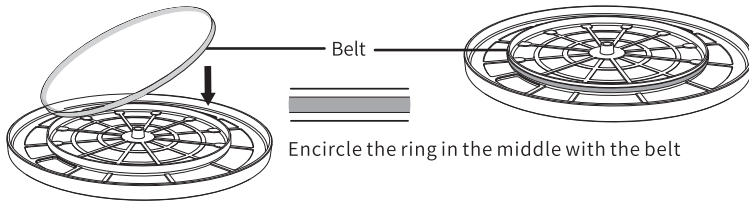


● 唱片机操作

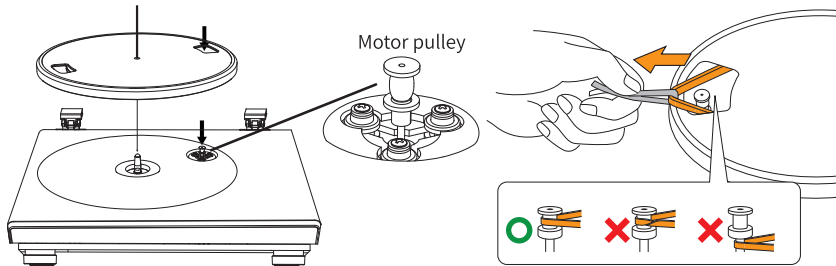
- 先将音量调至足够低。
- 将附带的电源线连接到唱片机，长按电源键开机或关机，设备启动时指示灯会亮起。
- 选择蓝牙模式或 RCA 模式。
- 解锁唱臂，取下唱针保护套。
- 播放 45 转 / 分钟 (45RPM) 唱片时，播放前需确保将提供的 45 转适配器正确安装在唱片机转轴上。
- 根据唱片类型，旋转转速开关 (SPEED) 选择 33 转 / 分钟 (33RPM) 或 45 转 / 分钟 (45RPM)。
- 根据唱片尺寸，旋转尺寸开关 (SIZE) 选择 7 英寸或 12 英寸。
- 按下开始 / 停止键 (START/STOP) 开始播放，再次按下停止播放。
- 按下唱臂升降键 (UP/DOWN) 可抬起或放下唱臂。
- 按下重复播放键 (REPEAT) 可设置重复播放模式，唱片播放完毕后将自动重启播放，再次按下可取消该模式。
- 唱片播放完毕后，唱臂将返回唱臂支架，将唱针保护套重新安装好，关闭设备电源，所有指示灯将熄灭。

Installing the turntable/belt

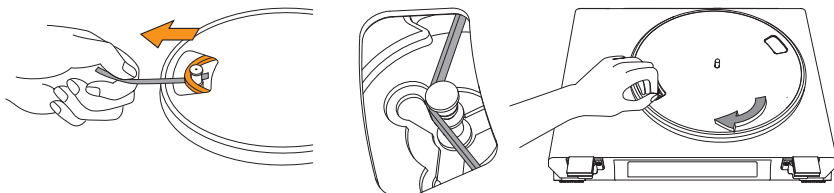
- The belt is a consumable. If the playback speed slows down or the rotation becomes irregular, the belt needs to be replaced. It is recommended to replace it annually.
- Before replacing the belt, be sure to disconnect the AC adapter. When using the turntable for the first time, the belt needs to be installed. The steps are as follows:
- Rotate the turntable and you will see a raised ring. Encircle this ring with the belt.



- Installing the turntable: Align one of the openings on the turntable with the motor pulley and install it.

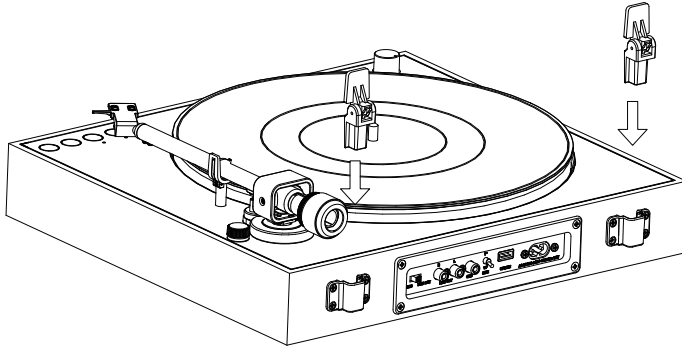


- Placing the belt on the motor pulley: Hold the belt and slide it into the groove of the brass motor pulley, then remove the ribbon from the belt.
- Rotate the turntable slowly clockwise ten times with your hand as shown in the diagram.

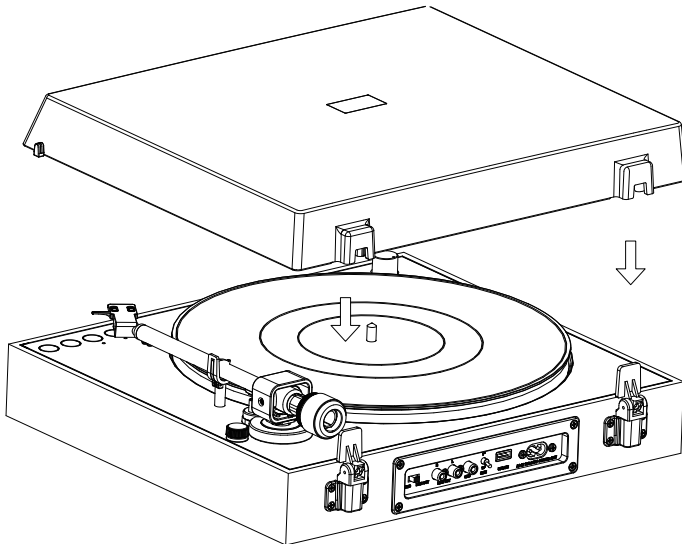


Installing the transparent cover

- Insert the pivot shafts into the slots on the turntable.



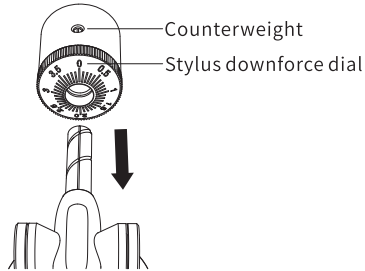
- Align the mounting holes of the transparent cover with the pivot shafts and insert.



Stylus downforce adjustment

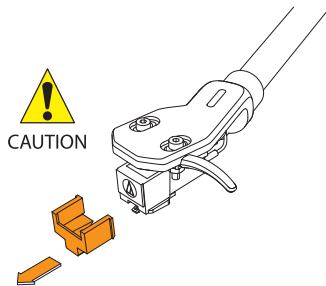
The included counterweight is suitable for cartridges weighing 0–4g. The adjustment steps are as follows:

- Gently push and rotate the counterweight to install it on the tonearm's rear end (with the dial facing the front of the turntable).

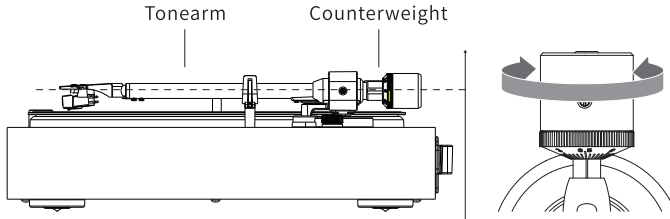


- Carefully remove the stylus protective cover by pulling it straight forward horizontally.

Notes and precautions: Forcing the stylus protective cover off downward may cause the stylus to detach. If the stylus is about to detach or has already detached, only a faint sound will be produced during playback. In this case, please refer to the "Replacing the stylus" section to ensure the stylus is properly installed.

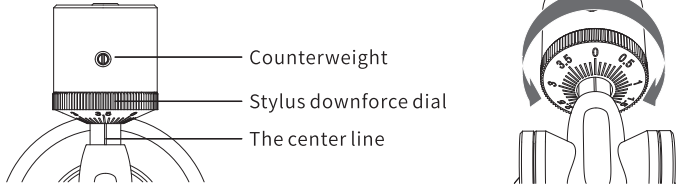


- Remove the cable tie to unlock the tonearm.
- Press the tonearm lifter rod to place the cartridge in the gap between the tonearm holder and the turntable, then release the tonearm lifter rod.
- Carefully rotate the counterweight until the tonearm is balanced. If the tonearm is accidentally touched, it should return to this balanced position after a slight wobble.

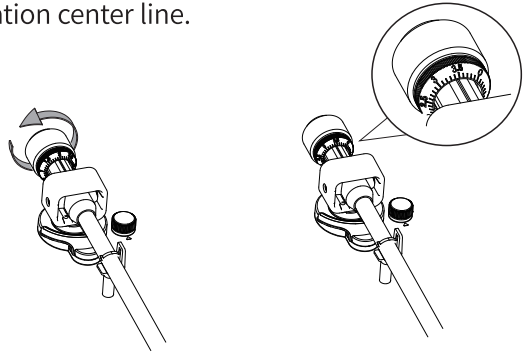


Rotate the counterweight until the tonearm reaches a horizontal balanced state

- Once the tonearm reaches balance, gently place it back on the tonearm holder and secure it. Hold the counterweight with one hand and rotate the stylus downforce dial with the other hand so that the "0" mark aligns with the center line of the dial. Then release the tonearm and confirm that it maintains horizontal balance.

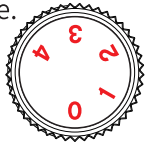


- Finally, rotate the counterweight counterclockwise (when viewed from the front) until the recommended stylus downforce value (3.5g) aligns with the stylus downforce calibration center line.



Notes and precautions: Each graduation on the dial represents 0.1g. The recommended stylus downforce for the factory-preinstalled cartridge is 3.5g. Carefully rotate the counterweight to the 3.5 mark and align it with the center line.

- Set the anti-skating knob to the same value as the stylus downforce. If the stylus downforce is 3.0g, set the anti-skating value to 3; if distortion occurs in the left channel, slightly decrease the anti-skating value; if distortion occurs in the right channel, slightly increase the anti-skating value.

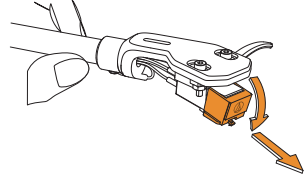


Replacing the stylus

It is recommended to replace the stylus after 400 hours of use. A worn stylus tip can not only degrade sound quality but also damage the records.

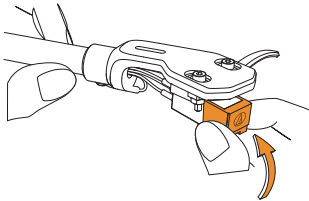
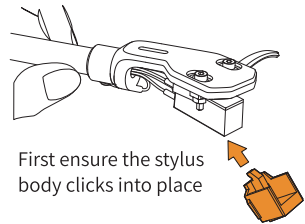
● Removing the stylus

- Be sure to disconnect the product's AC adapter from the power outlet.
- When replacing the stylus, firmly hold the cartridge shell and the cartridge.
- Rotate the front end of the stylus downward and forward to remove it.

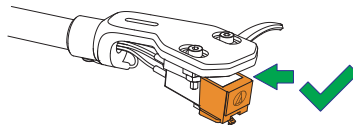
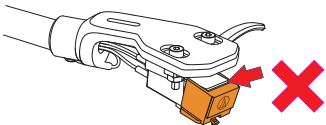


● Installing a new stylus

- Install a new stylus onto the cartridge, first ensuring the stylus body clicks into place.
- Lift the stylus until you hear a "click" sound, confirming it is securely installed.

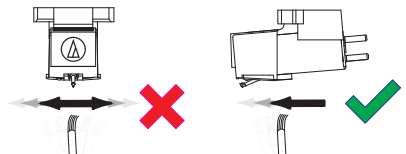


- Ensure there is no gap between the cartridge shell and the cartridge.



● Cleaning the stylus

- When the stylus is contaminated with dust or dirt, please clean it with a soft brush.
- It is recommended to use a stylus-specific cleaner (not included).
- Gently remove dust from the base of the stylus tip towards the tip.



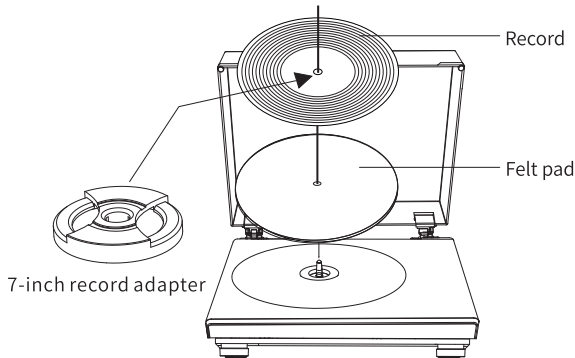
Playing a record

● Preparation before playing

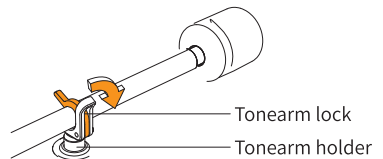
- Remove the stylus protective cover by pulling it horizontally forward.

Notes and precautions: Applying downward force may cause the stylus to detach. If the stylus is about to detach or has already detached, only a faint sound will be produced during playback. In this case, please refer to the "Replacing the stylus" section to ensure the stylus is properly installed.

- Place the record on the felt pad, align the center hole of the record with the spindle.



- Unlock the tonearm and remove it from the tonearm holder.



● Turntable operation

- First, turn the volume down to a low level.
- Connect the included power cord to the turntable. Long press the power button to turn the device on or off; the indicator light will illuminate when the device is powered on.
- Select Bluetooth mode or RCA mode.
- Unlock the tonearm and remove the stylus protective cover.
- When playing a record at 45RPM, ensure the provided 45RPM adapter is correctly installed on the turntable spindle before playback.
- Depending on the record type, rotate the speed switch (SPEED) to select 33RPM or 45RPM.
- Depending on the record size, rotate the size switch (SIZE) to select 7 inches or 12 inches.
- Press the START/STOP button to begin playback, and press again to stop playback.
- Press the tonearm UP/DOWN button to raise or lower the tonearm.
- Press the REPEAT button to set repeat playback mode; the record will automatically restart playback after completion. Pressing it again will cancel this mode.
- After the record finishes playing, the tonearm will return to the tonearm holder. Reinstall the stylus protective cover, turn off the device power, and all indicator lights will turn off.